

TATA STEEL

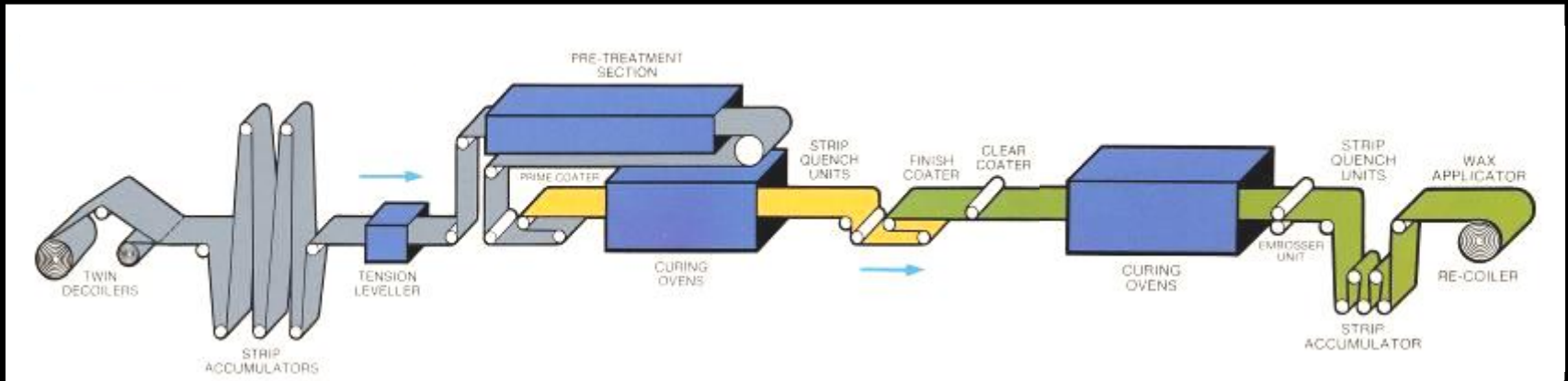


Erik Wip, Colorcoat® by Tata Steel

Gecoilcoat staal in de bebouwde omgeving

ION dag Maarsse, 12 nov 2015

COILCOATING

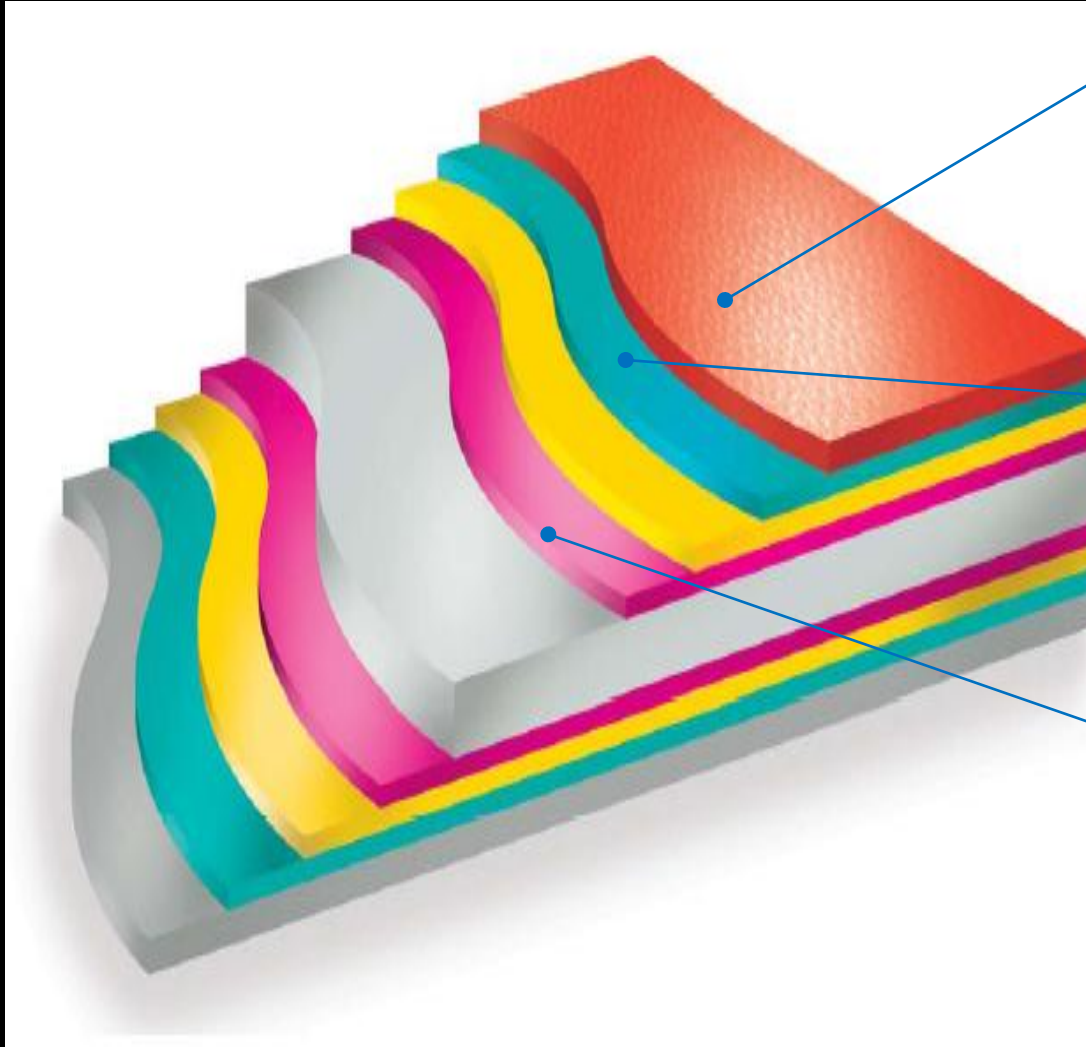


↑
Verzinkt Staal

→
Coaten

↓
Colorcoat®



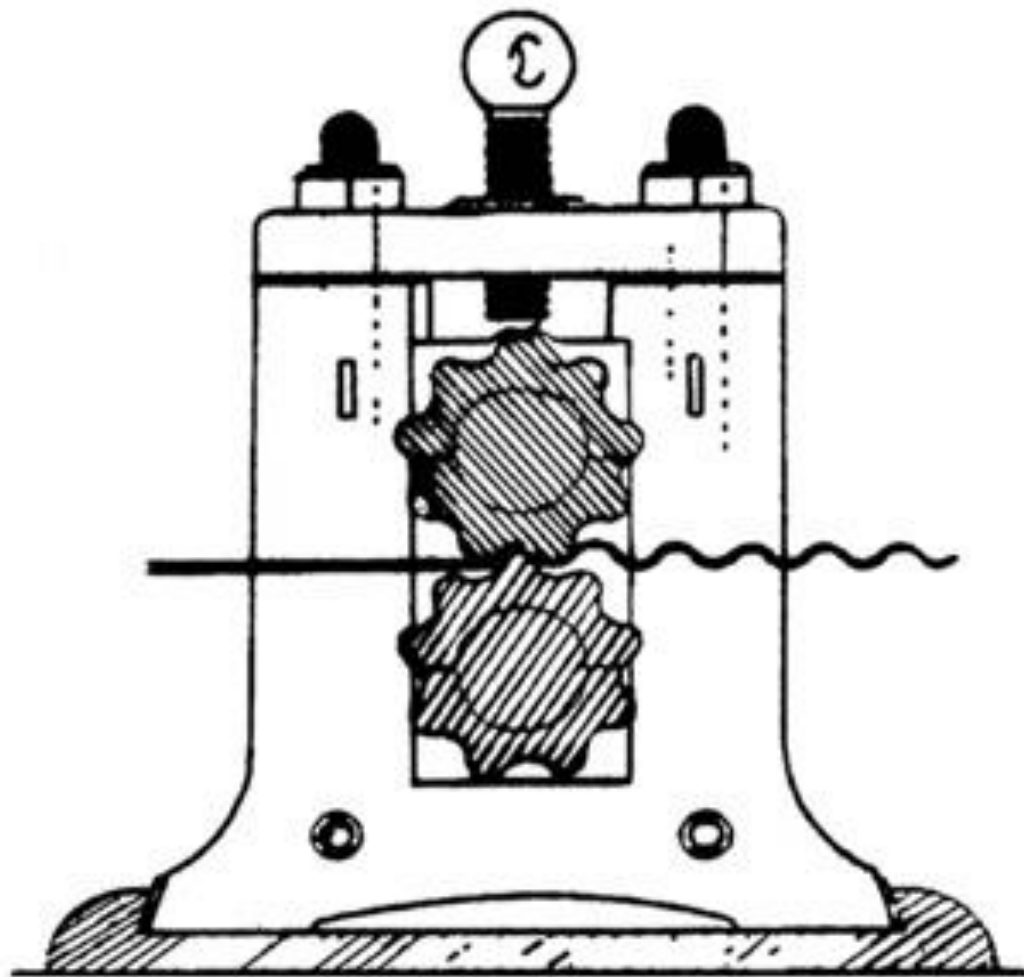


Topcoat
(PE, PVDF, HDP,
HPS200Ultra®, Prisma®)
*UV, Robuustheid,
Corrosieweerstand*

Primer
*Corrosiebescherming +
Flexibiliteit*

Z - Zink
MZ - Magizinc®
ZA - Galvalloy®
*Basis voor
Corrosieweerstand*

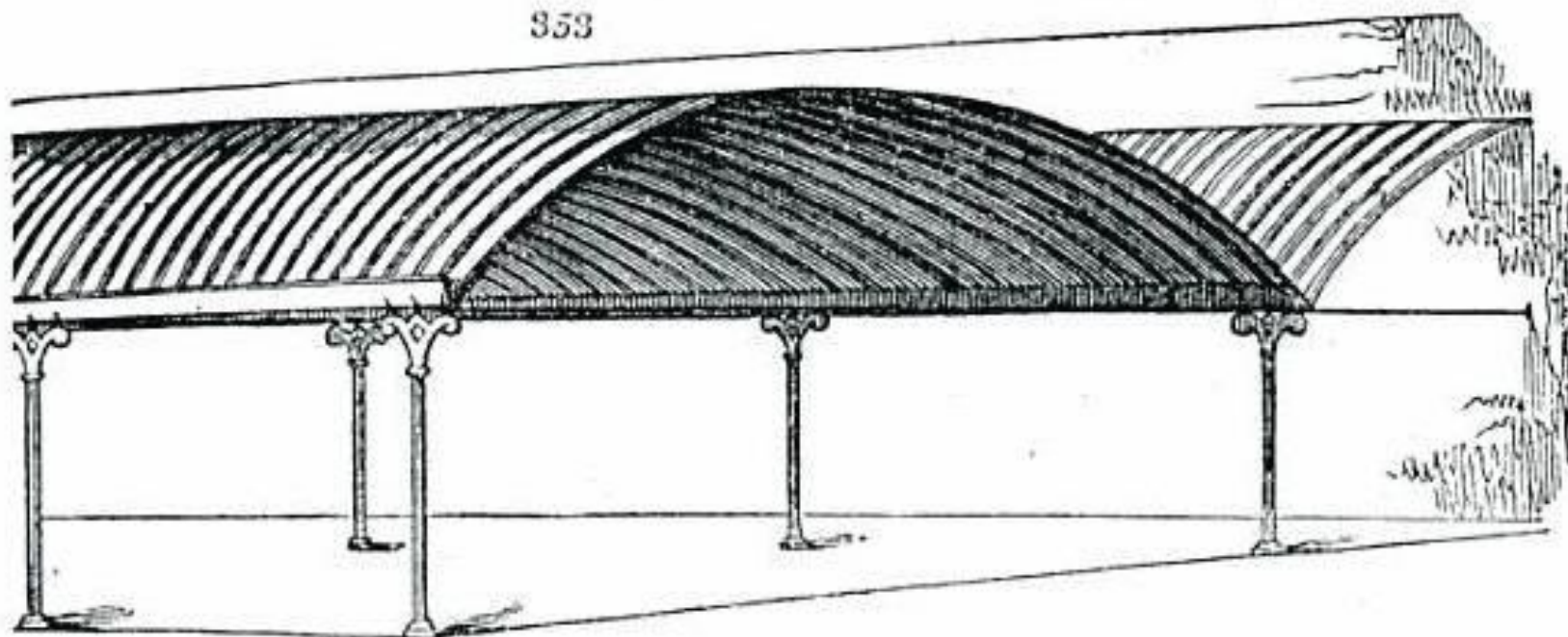
PREHISTORIE





The Turpentine Shed at the London Docks, c.1830, was the world's first building with a corrugated iron roof.

353



DAVID ROWELL & CO., 31, OLD QUEEN STREET, WESTMINSTER, LONDON, S.W.

GALVANIZED CORRUGATED IRON PORTABLE HOUSES FOR HOME OR ABROAD.

Cool in Summer. Warm in Winter. Habitable as soon as erected. No possibility of Dampness.

TENANTS' FIXTURES, SUITABLE FOR LEASEHOLD PROPERTIES, CAN BE READILY REMOVED AND RE-ERECTED.

No. 8.—WORKMEN'S COTTAGES.

No. 10.—COTTAGE FOR GARDENERS, &c.

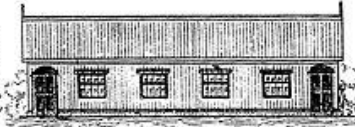
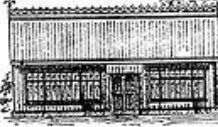
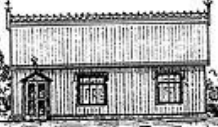
No. 11.—GATEKEEPER'S LODGE.

No. 12.—EMIGRANT'S HOUSE.

No. 13.—TEMPORARY RESIDENCE.

No. 14.—SUMMER VILLA.

No. 15.—LABOURERS' COTTAGES OR ALMHOUSES.



Price complete, Single Cottages, £89 15 0 Pair, £172 10 0

Price complete, £119 12 6

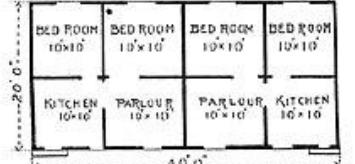
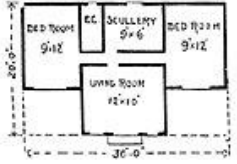
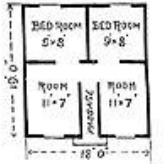
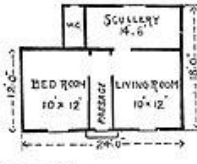
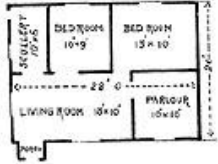
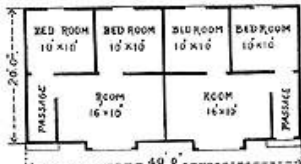
Price complete, £131 2 6

Price complete, £101 5 0

Price complete, £93 5 0

Price complete, £105 17 6

Price complete, Single Cottages, £82 17 6 Pair, £159 15 0



No. 16.—SMALL FARMHOUSE, OR BAILIFF'S COTTAGE.

No. 17.—ATTENDANT'S COTTAGE, For Hospitals, &c.

No. 18.—SHOOTING BOX, OR GARDEN PAVILION.

No. 19.—STEWARDS OR KEEPER'S COTTAGE.

No. 20.—COMFORTABLE AND COMPACT BUNGALOW, For Home or Abroad.

No. 21.—ORNAMENTAL ENTRANCE LODGE.

No. 22.—ORNAMENTAL COTTAGE, For Hunting, &c.



Price complete, £163 7 6

Price complete, £112 15 0

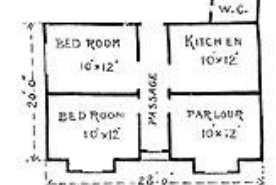
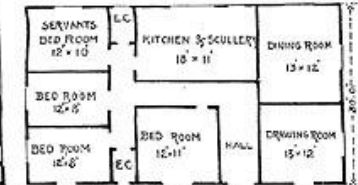
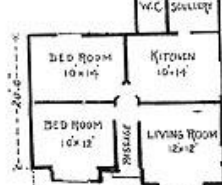
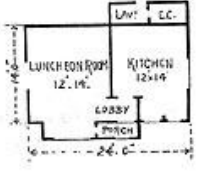
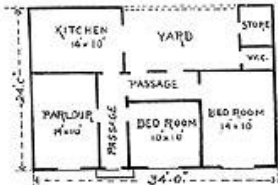
Price complete, £90 7 6

Price complete, £154 2 6

Price complete, £333 10 0

Price complete, £135 0 0

Price complete, £149 10 0



No. 23.—COMMODOUS BUNGALOW, OR HOLIDAY RESIDENCE.

No. 24.—SMALL DWELLING, For Tropical Climates.

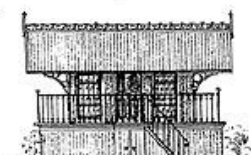
No. 25.—INDIAN BUNGALOW, Specialty suited for damp soils.

No. 26.—COLONIAL TRADING STORE AND DWELLING HOUSE.

No. 27.—PLAIN 2-STORY COTTAGE, (Three Bedrooms on First Floor).

No. 28.—SUSSEX VILLA, (Four Bedrooms on First Floor).

No. 29.—BRAZILIAN TOBACCO STORE, With Dwelling Rooms above.



Price complete, £195 10 0

Price complete, £164 10 0

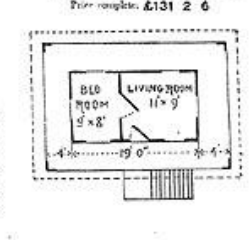
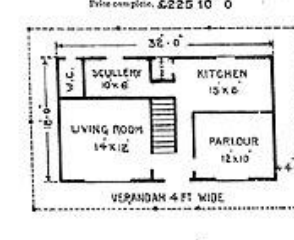
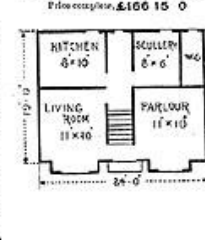
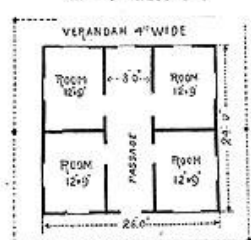
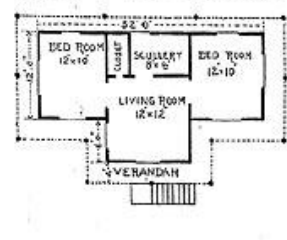
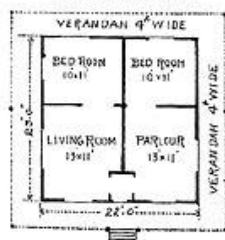
Price complete, £270 5 0

Price complete, £293 5 0

Price complete, £166 15 0

Price complete, £225 10 0

Price complete, £131 2 6



BUILDINGS FOR THIS COUNTRY.

GENERAL SPECIFICATION FOR BUILDINGS IN THIS LIST.

BUILDINGS FOR ABROAD.

The price in this list cover cost of delivery to most Railway Stations in England, complete to specification.

WOODWORK.—The framing to be of good, sound, and substantial yellow deal or pitch pine, seasoned and mortised together, so as to admit of being taken down and re-erected when required.

IRONWORK.—Shells to be of 31 B.W.G. Galvanized Corrugated Iron, evenly corrugated and well galvanized. All necessary hardware to be provided for, as detailed in the contract of sale for each building.

The price in this list cover cost of parking for shipment and of delivery to the country, complete to specification. The price is quoted on the basis of a 1000 lb. weight of iron.

ARCHITECTUUR



- Kolommen
- Vrije plattegrond
- Vrije gevels
- Horizontale vensters
- Functioneel dak

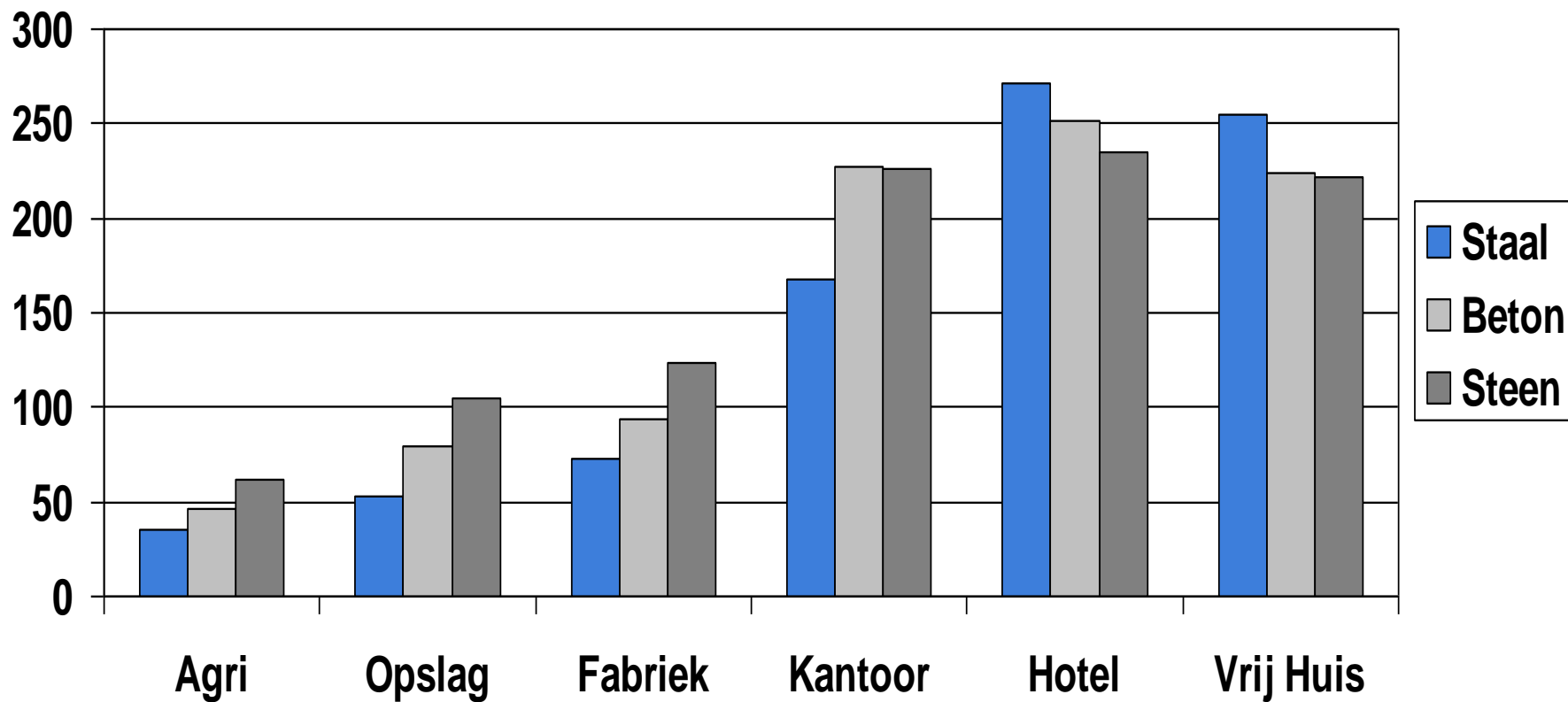


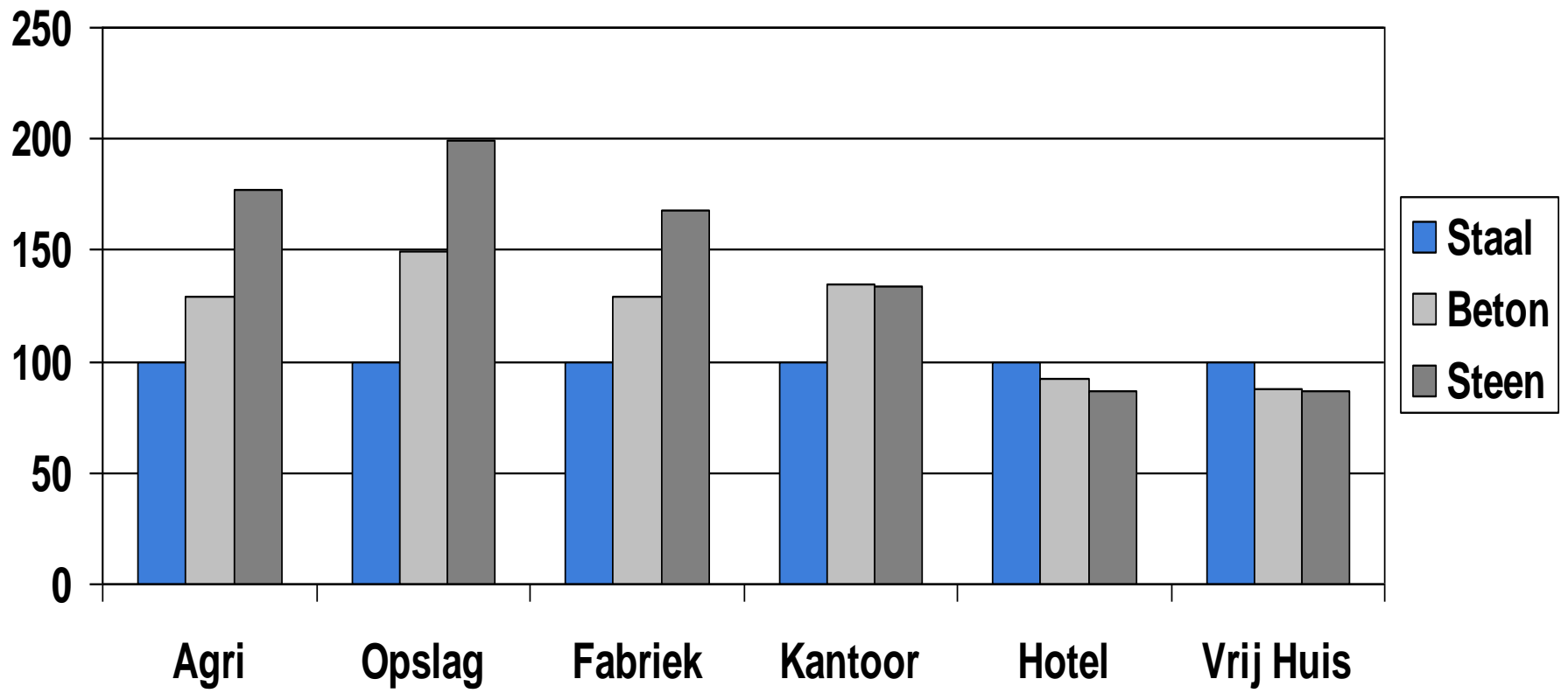




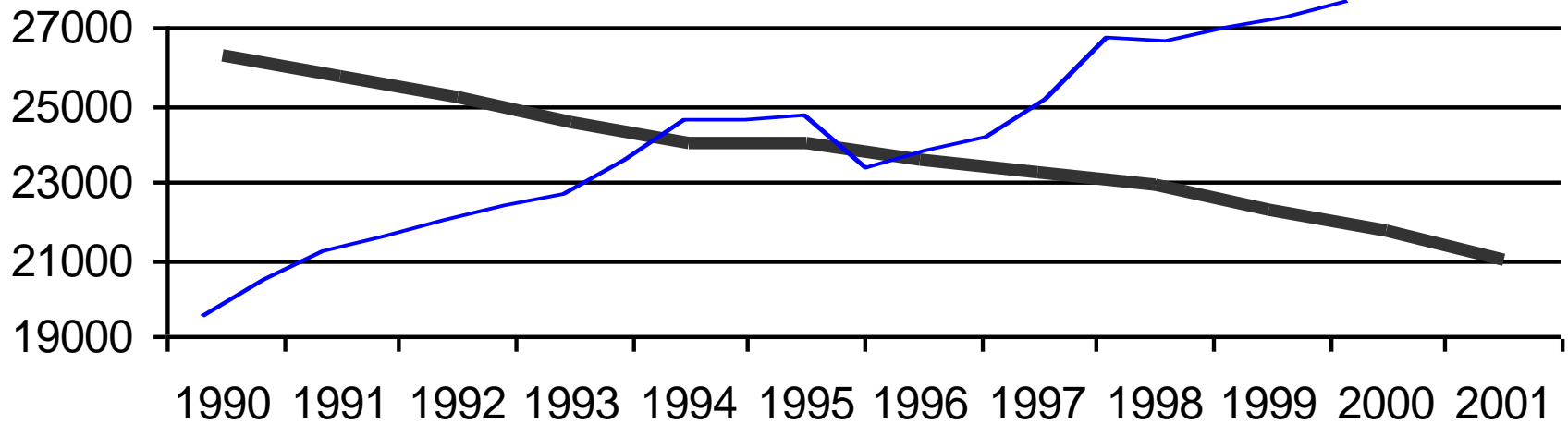
KOSTEN







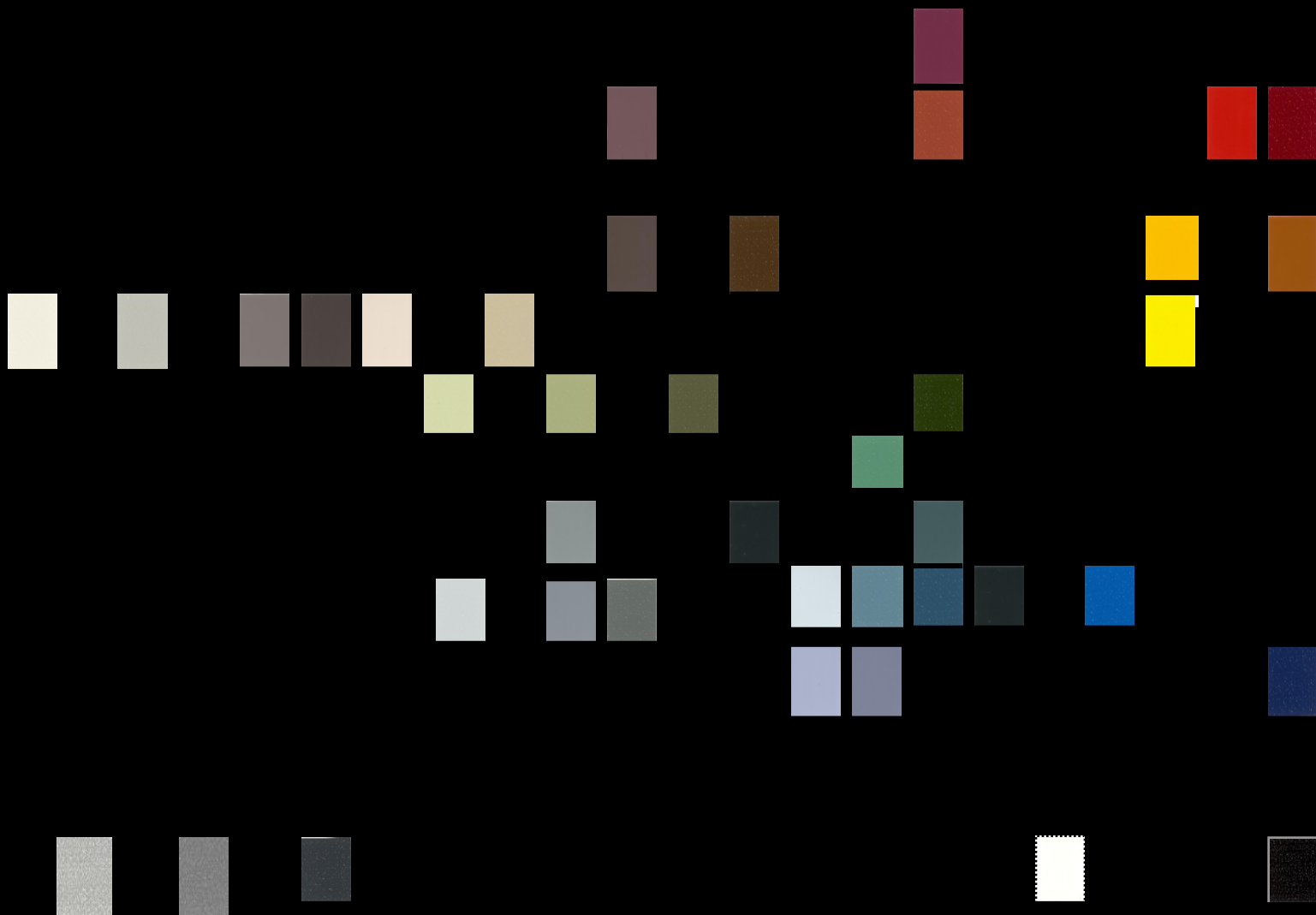
Arbeidsbestand metselaars (Prof. Lichtenberg 2007)



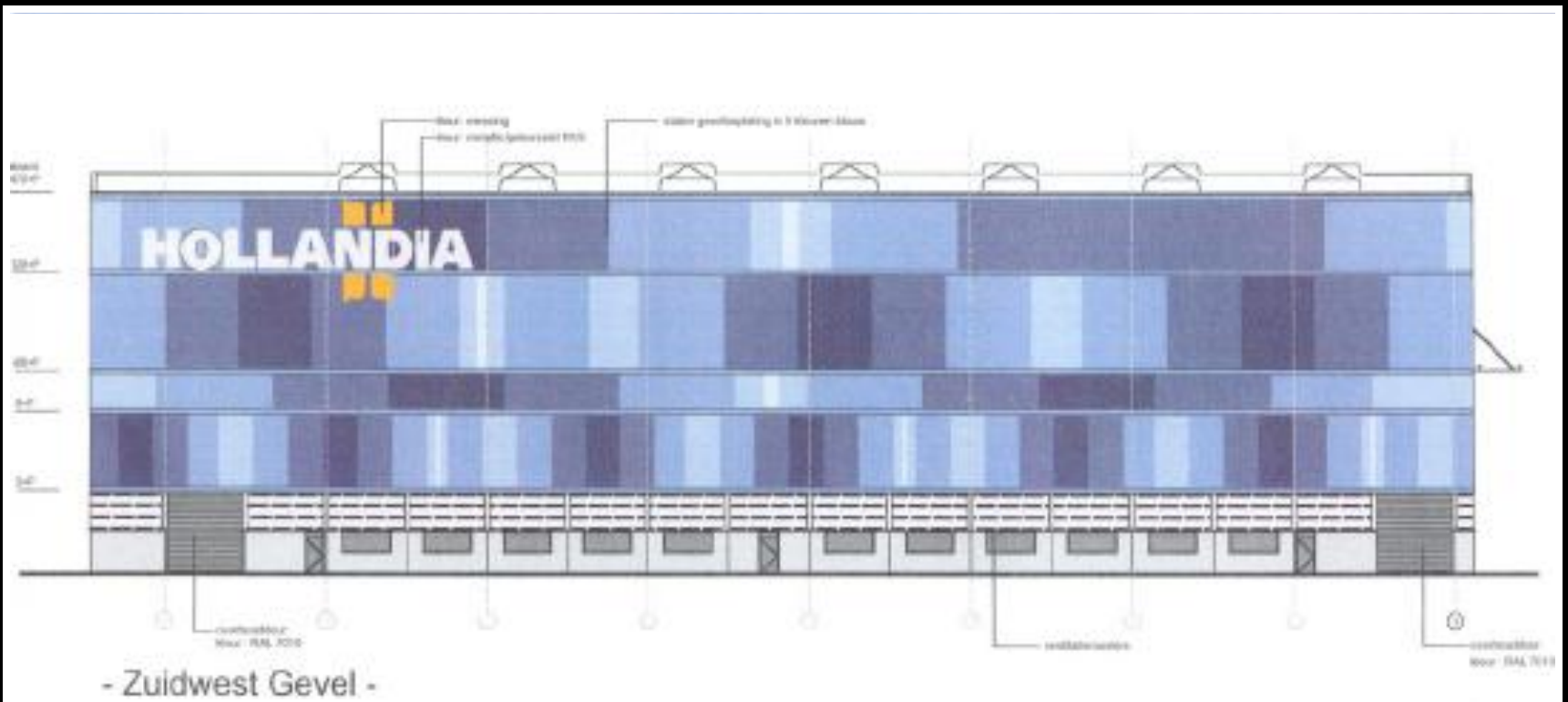
Omzet Colorcoat®

ESTHETIEK

KLEURONTWIKKELING







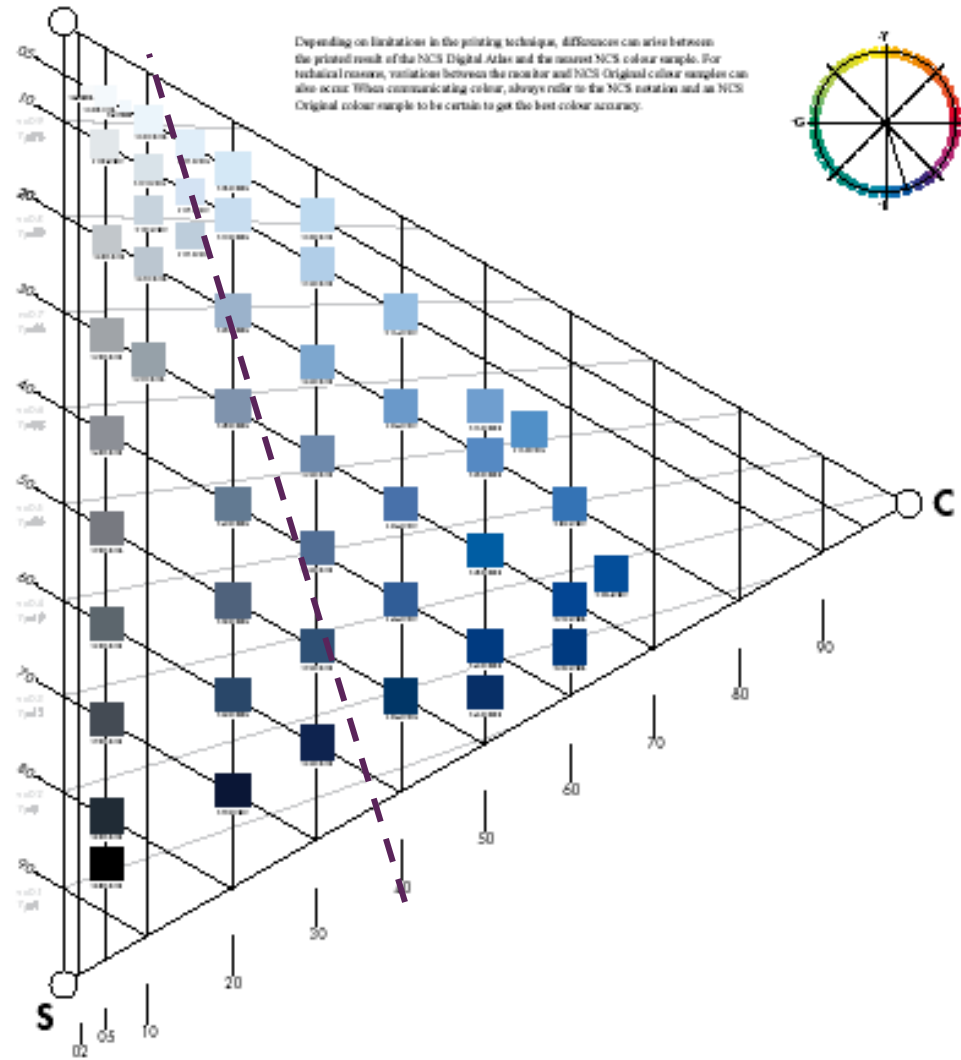
Hollandia, Krimpen, Metropolis

Colorcoat HPS200®

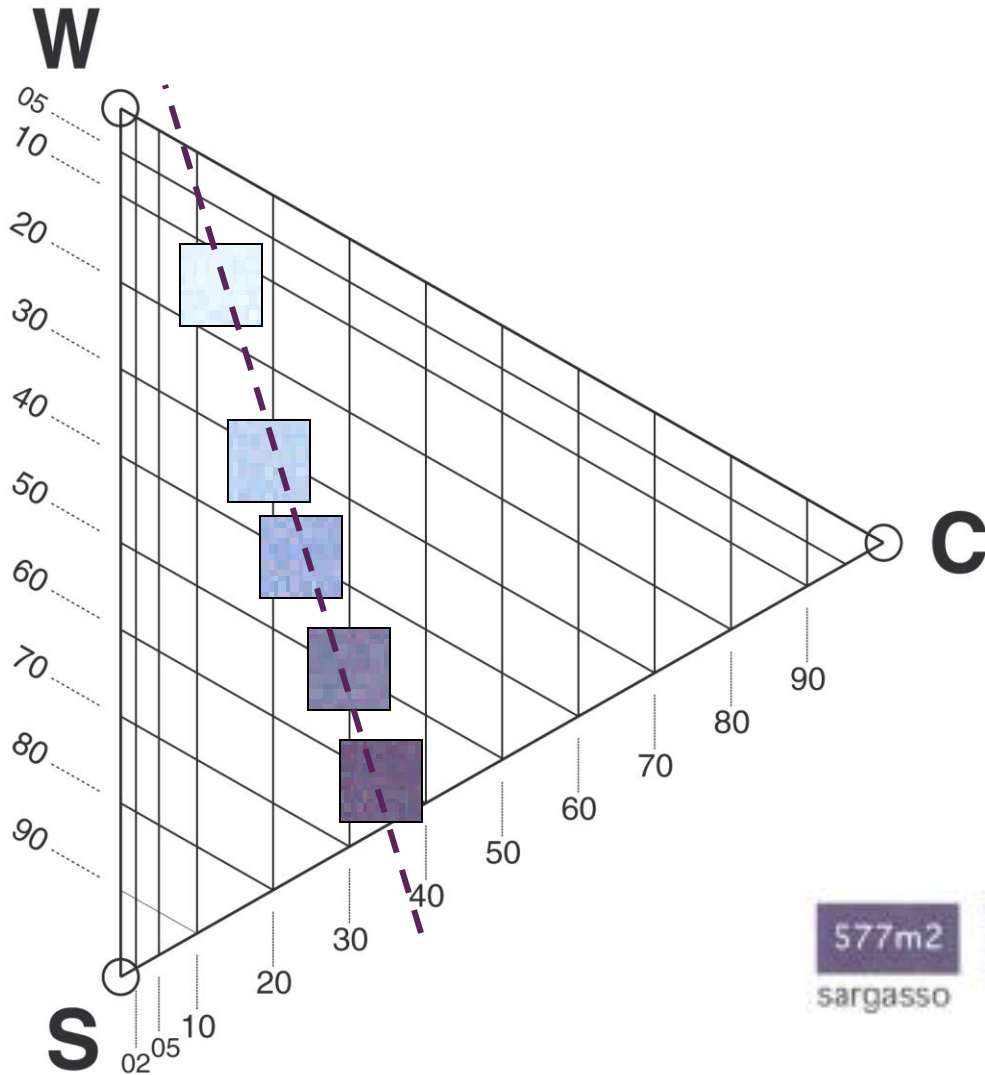
W

-R80B

Depending on limitations in the printing technique, differences can arise between the printed result of the NCS Digital Atlas and the nearest NCS colour sample. For technical reasons, variations between the monitor and NCS Original colour samples can also occur. When communicating colour, always refer to the NCS notation and an NCS Original colour sample to be certain to get the best colour accuracy.



Colorcoat HPS200®





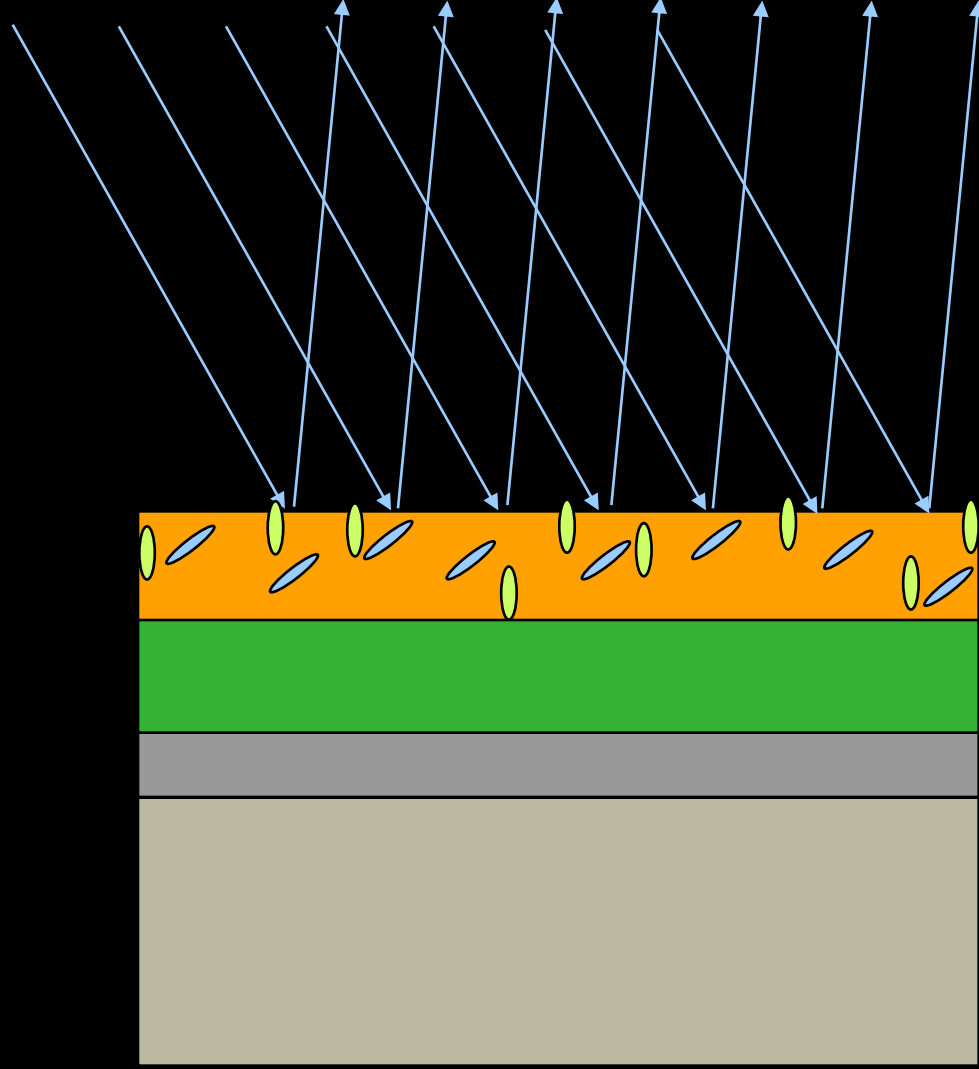
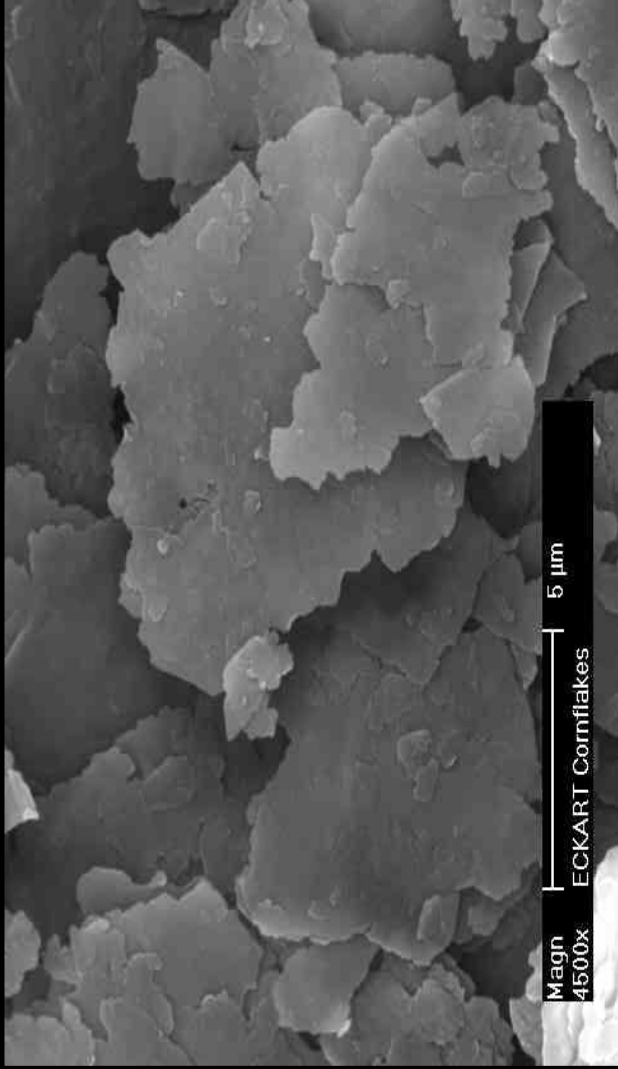
METALLIC



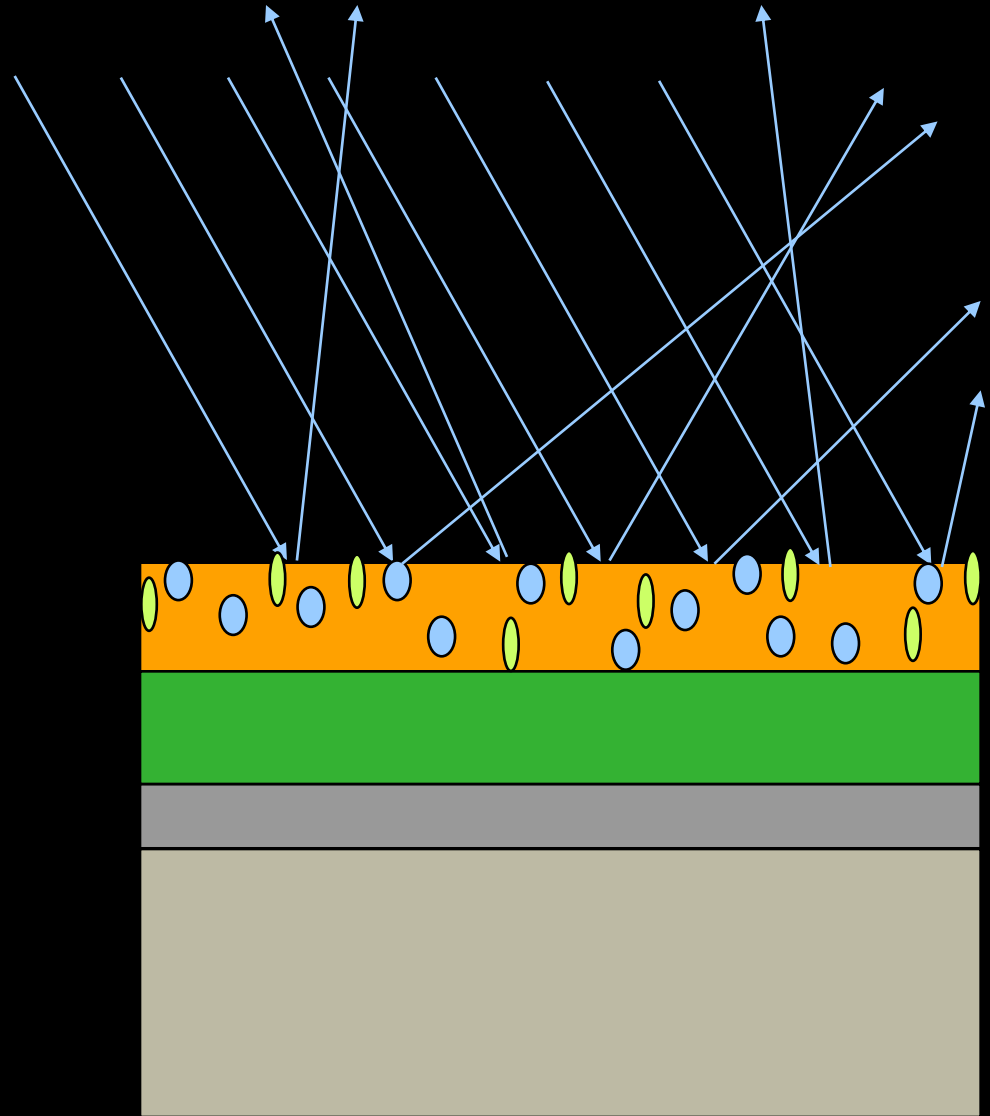
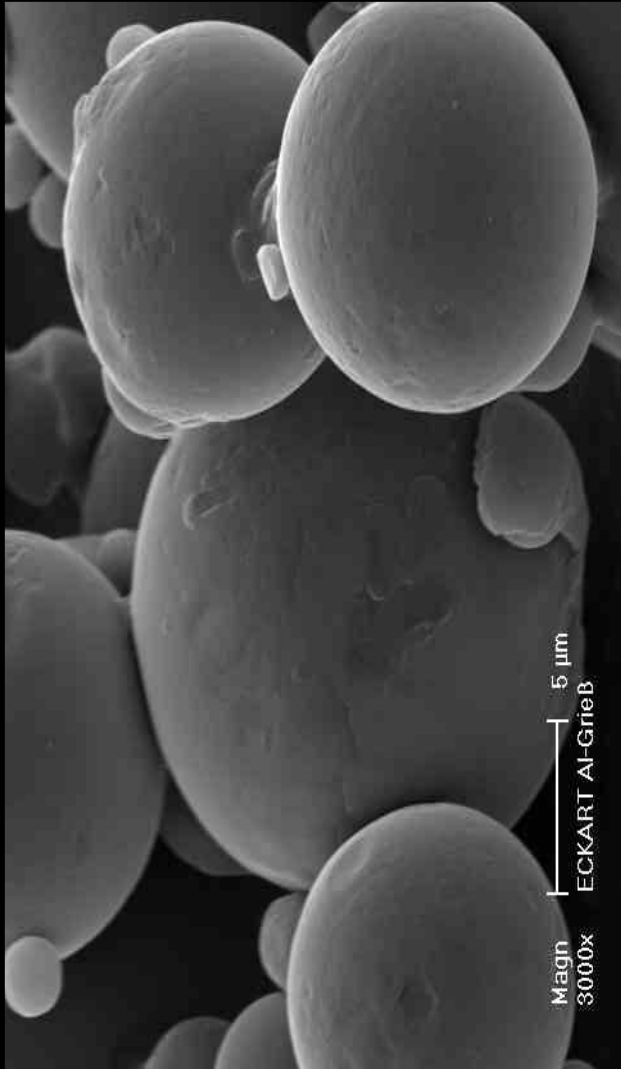
INHOLLAND Rotterdam

INHOLLAND

Hogeschool INHOLLAND Rotterdam



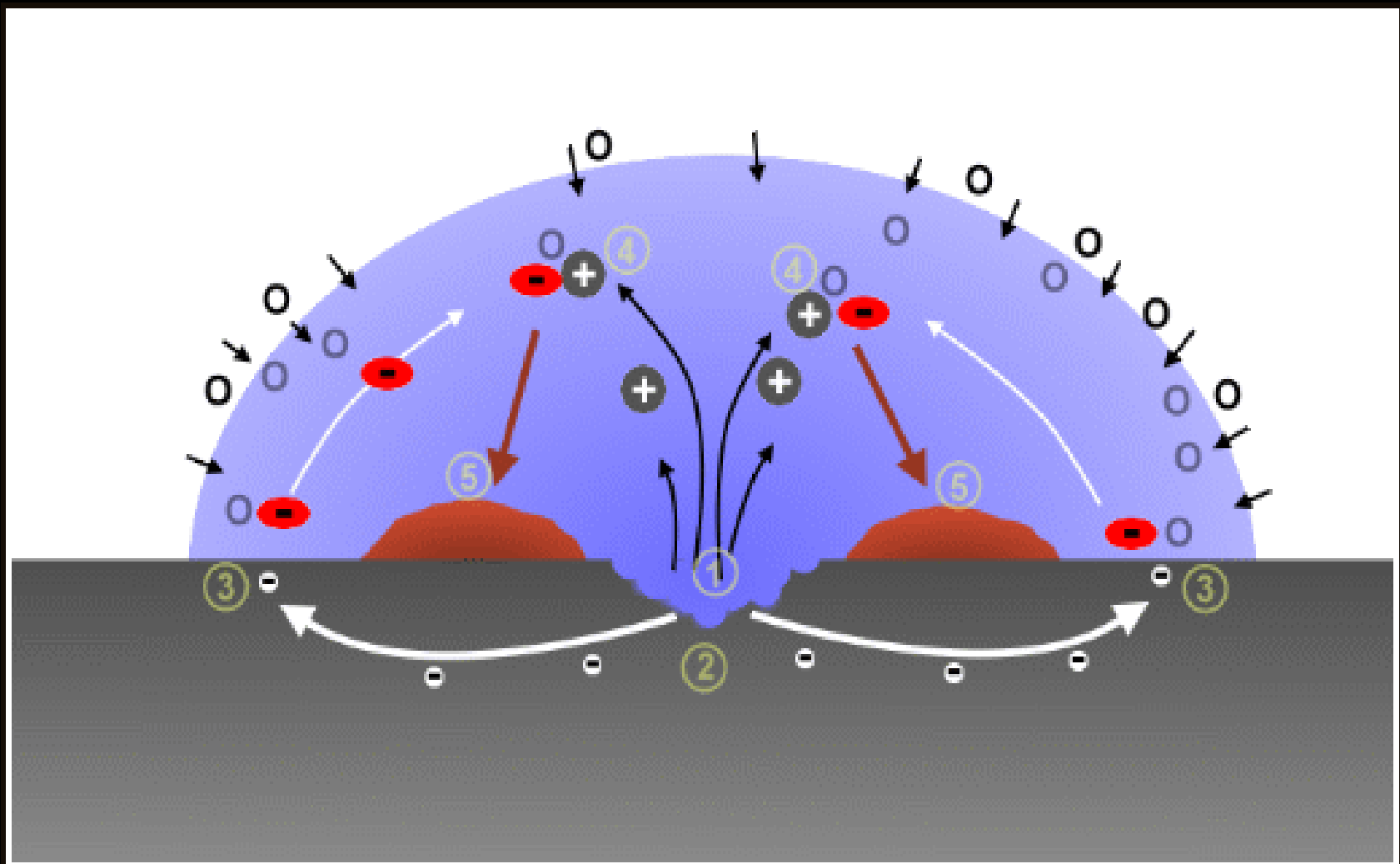


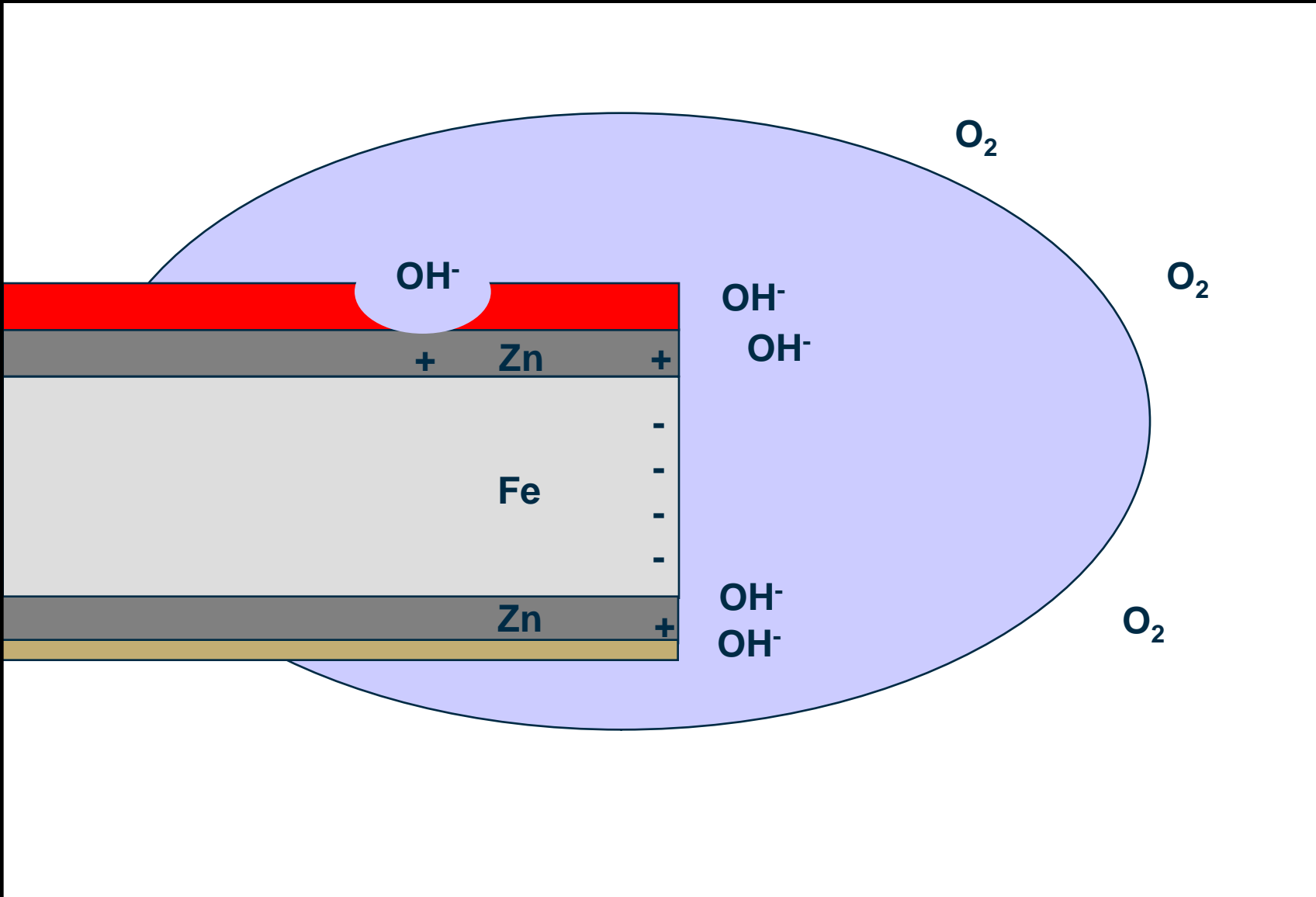


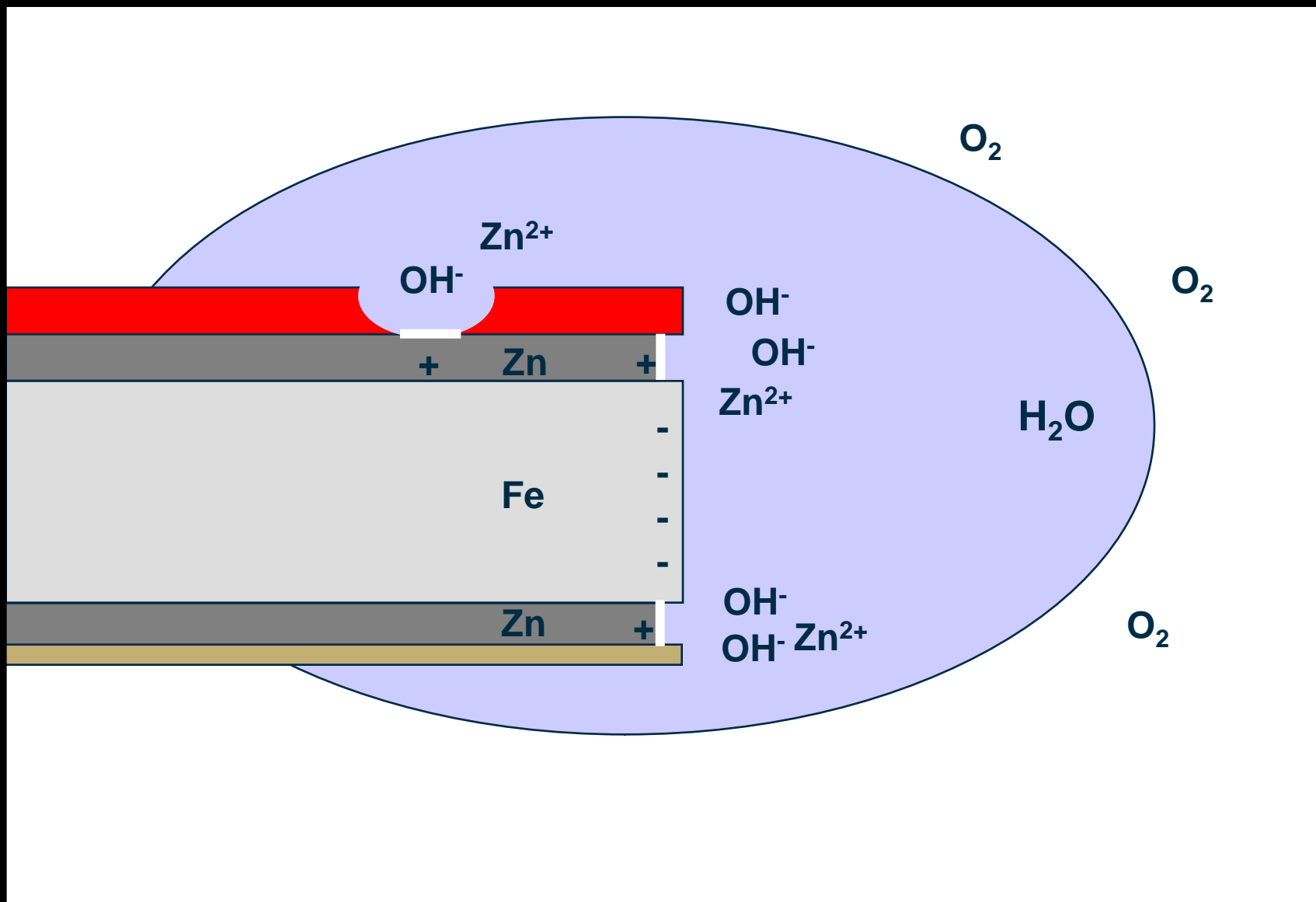
13
November
2015

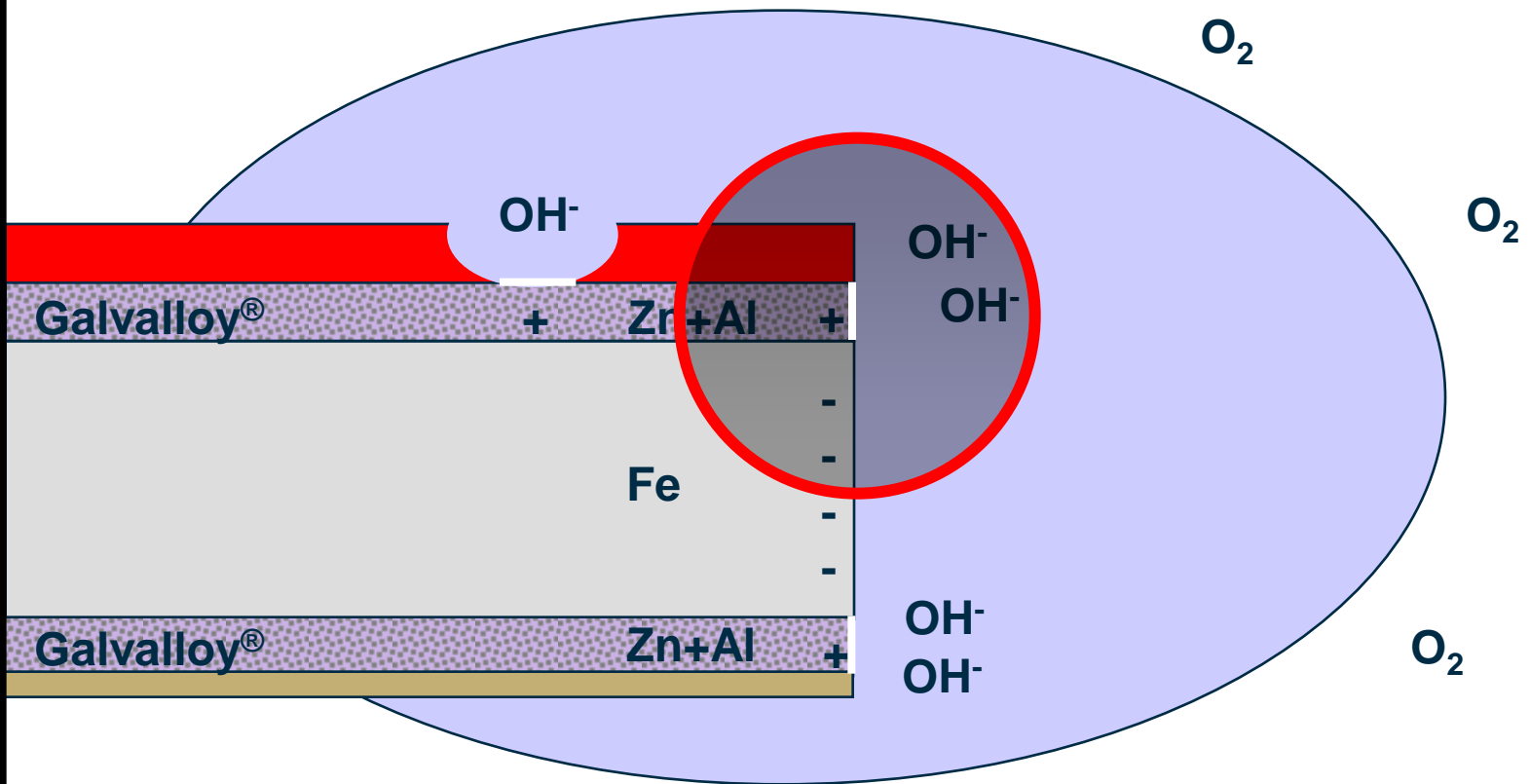


CORROSIE

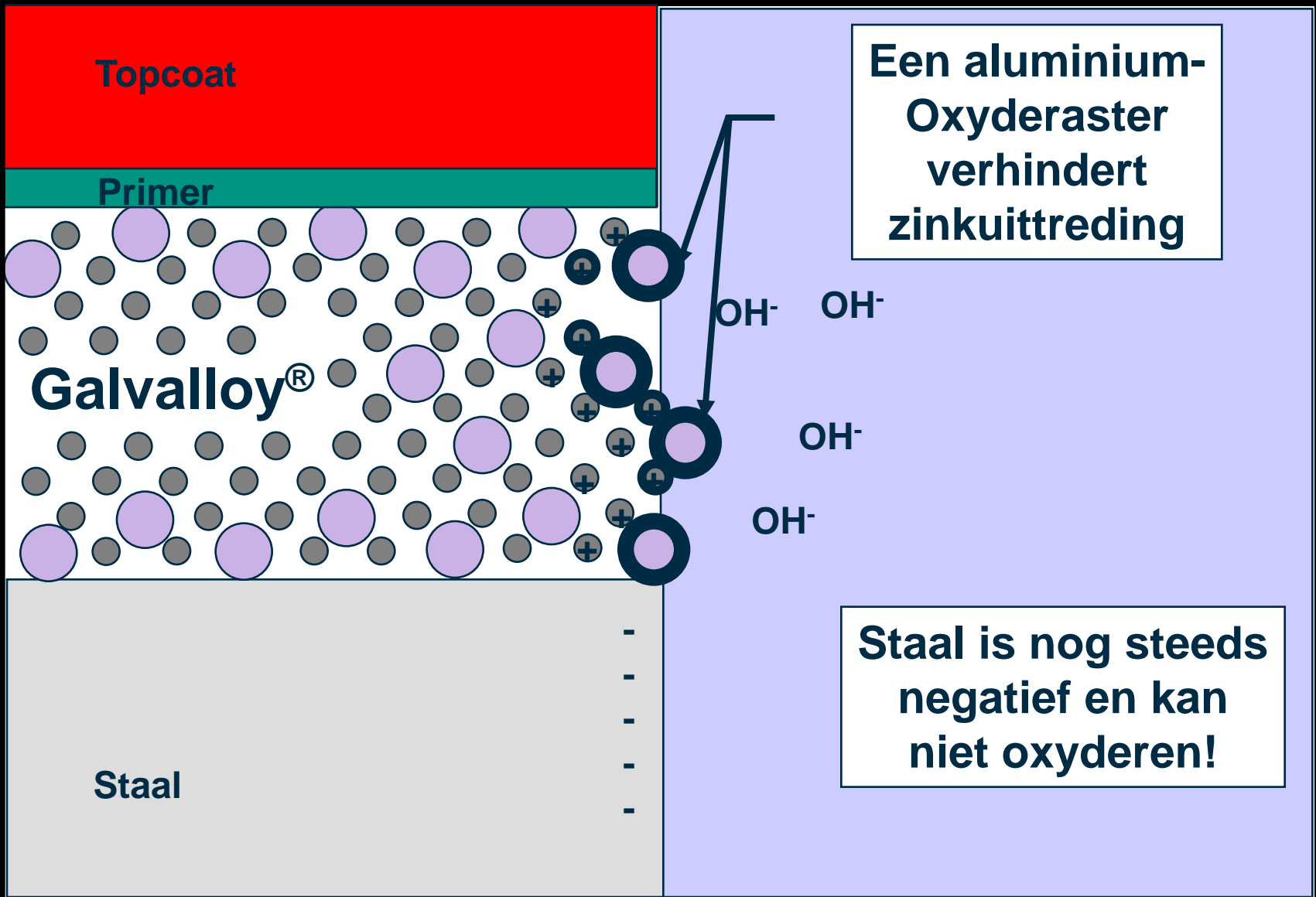








Galvalloy[®] = 95% Zn + 5% Al (Gewicht); 85% Zn + 15% Al (Volume)



Topcoat

Primer

Galvalloy[®]

Staal

Een aluminium-Oxyderaster verhindert zinkuittreding

OH^- OH^-
 OH^-
 OH^-

Staal is nog steeds negatief en kan niet oxyderen!

-
-
-
-
-

Werkt dat nou?

Colorcoat[®]

HPS200[®],

op basis van Galvalloy[®]

Lederstructuur plastisol,

op basis van verzinkt staal



1000 hours prohesion test: ASTM G85 /

5



1000 hours prohesion test: ASTM G85 /

5



Het Strijkijzer • Den Haag • AA Architecten

Colorcoat HPS200®

SYSTEMPRESTATIES



ATLAS

MATERIAL TESTING SOLUTIONS

ATLAS WEATHERING SERVICES GROUP

South Florida Test Service
16100 Southwest 216th Street
Miami, Florida 33170 USA
Phone (305) 245-3659
Fax (305) 245-9122
www.atlas-mts.com

NATURAL WEATHERING TEST CERTIFICATE

TEST NUMBER: FS34656

COMPANY: BASF Coatings Limited
Unit 101, Tenth Avenue
Deeside Industrial Park
Deeside, FLN CH5 2UA
United Kingdom

CLIENT: Mr. Neil Vaughan

TEST METHOD: ASTM G7
EXPOSURE TYPE: Direct Weathering – Florida
45° South with Open Backing

EXPOSURE DATE: October 7, 2008
COMPLETION DATE: October 7, 2010
EXPOSURE DURATION: 24 Months

RADIANT EXPOSURE: Total: 12,353 MJ/m²
TUVB: 612 MJ/m²

SPECIMEN QUANTITY: 8

SPECIMEN CODES: 688-14087 Colorcoat HPS200 Ultra – Sargasso
688-14088 Colorcoat HPS200 Ultra – Barn Red
688-14089 Colorcoat HPS200 Ultra – Pure Grey
688-14090 Colorcoat HPS200 Ultra – Straw
688-14092 Colorcoat HPS200 Ultra – Fox
688-14093 Colorcoat HPS200 Ultra – Camouflage
688-14094 Colorcoat HPS200 Ultra – White
688-14095 Colorcoat HPS200 Ultra – Mushroom

EVALUATIONS: Instrumental Color (CIE LAB Color Scale)
Specular Gloss (60°)

ADDITIONAL INFORMATION: Based on the requirements of EN10169:2010
Classification: Ruvs

Classification of Natural Weathering [Type of Panels 2 – EN 13523-19]

Panel Identification No & Description	Start of Exposure	Date of Inspection	Accumulative Time of Exposure (months)	Exposure Site & Corrosivity Category (EN ISO 12944-2)	Orientation of Exposed Panel
9KR097 – ZA255 / Colorcoat HPS200 Ultra (Goosewing grey)	05/10/2009	05/10/2011	24 months	Sainte Anne BREST (France) Carbon Steel – C5 (Very High) Zinc – C3 (medium)	90° North
Average Edge Delamination (mm)	Damage on Bend		Blistering		
Conforms to RC5 requirements	Conforms to RC5 requirements		Conforms to RC5 requirements		
Corrosion Resistance Category (as defined by EN 10169)					
The coil coated material ref 9KR097 (ZA255 /Colorcoat HPS200 Ultra (Goosewing grey)) may be classified RC5 according to standard EN10169					

 Brest, October 5th, 2011

Written by Jean-Michel Hamoignon



Approved by Nathalie Le Bozec



Stamp



PUR-PA

TATA STEEL



Colorcoat Prisma®
Inspireer uw
verbeeldingskracht

Confidex®



PVC-P

TATA STEEL



Colorcoat HPS200 Ultra®
Ongekende prestaties en
duurzaamheid

Confidex®

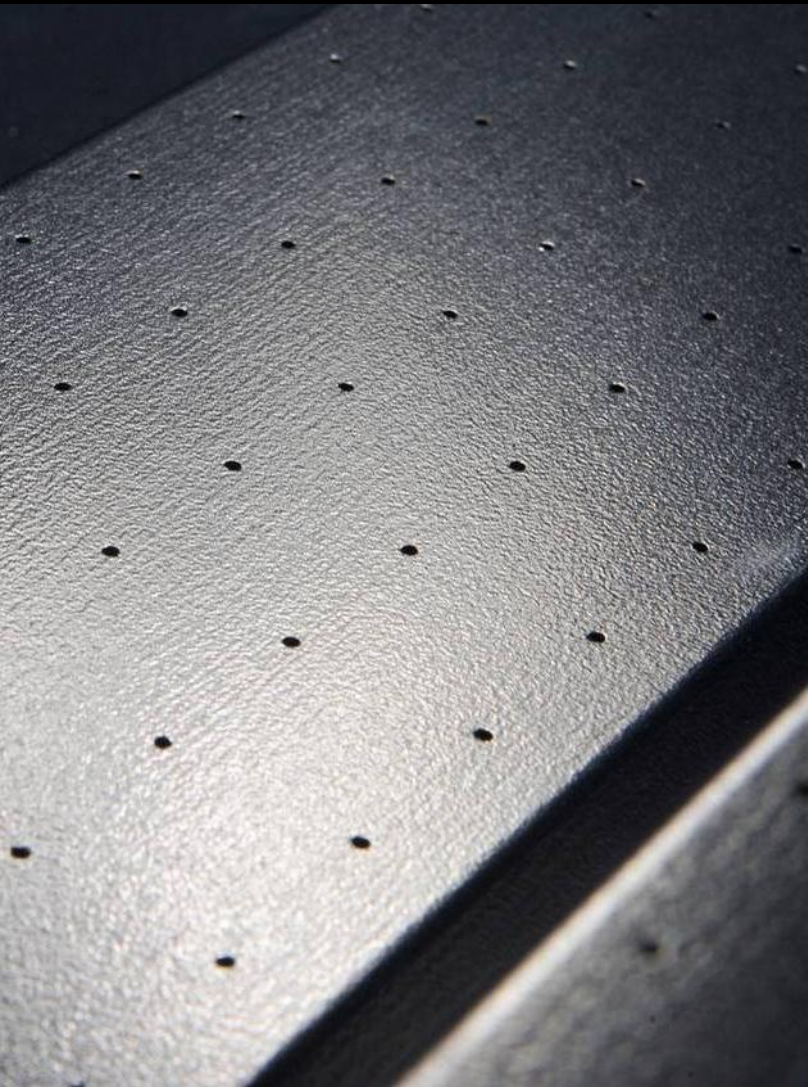


DUURZAAMHEID

ENERGIE - ST



WELSH SCHOOL OF ARCHITECTURE



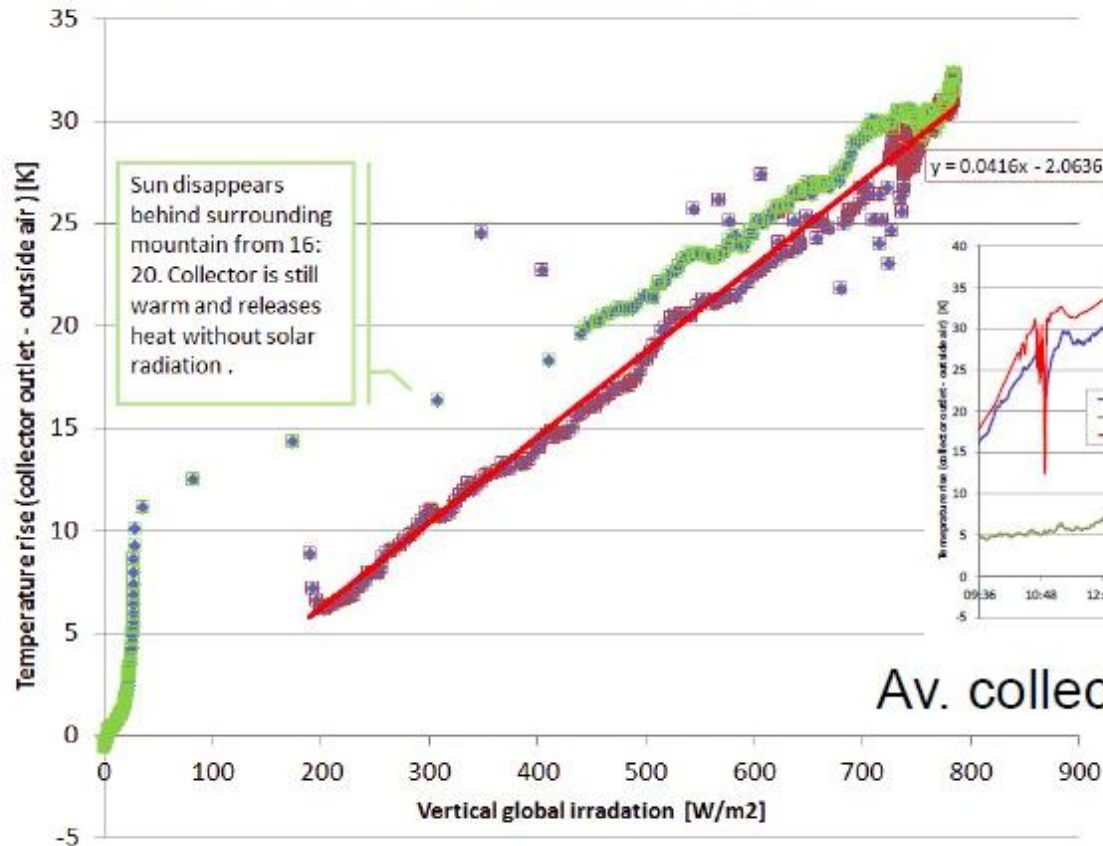


FRAUNHOFER ISE

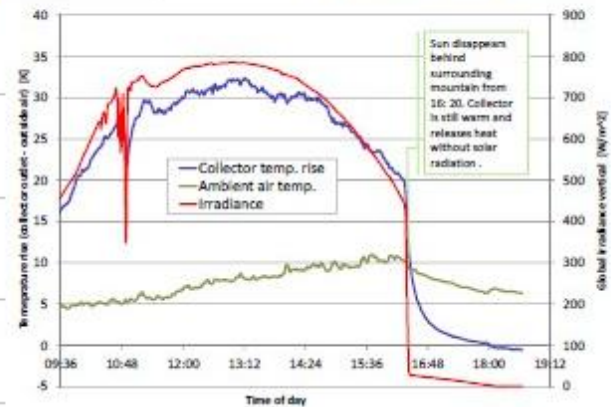


TH LUZERN

Results: collector performance curve



Feb. 23rd 2014



Av. collector efficiency: 62%

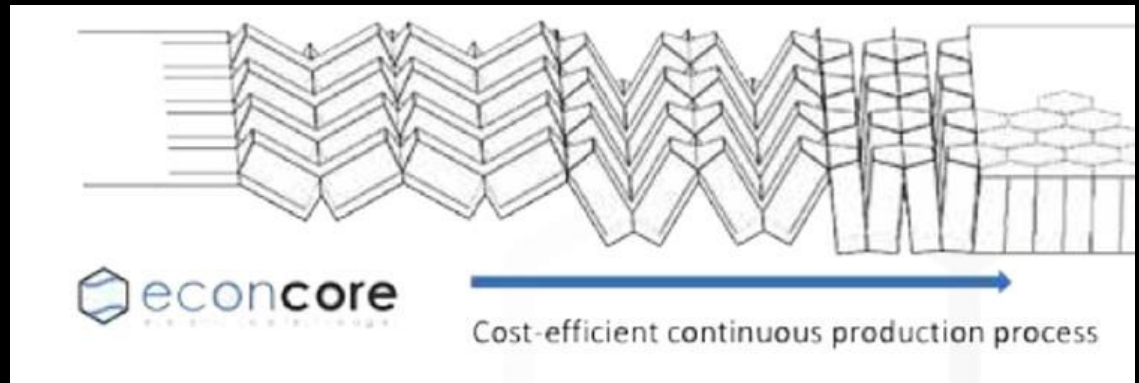
ENERGIE - PV



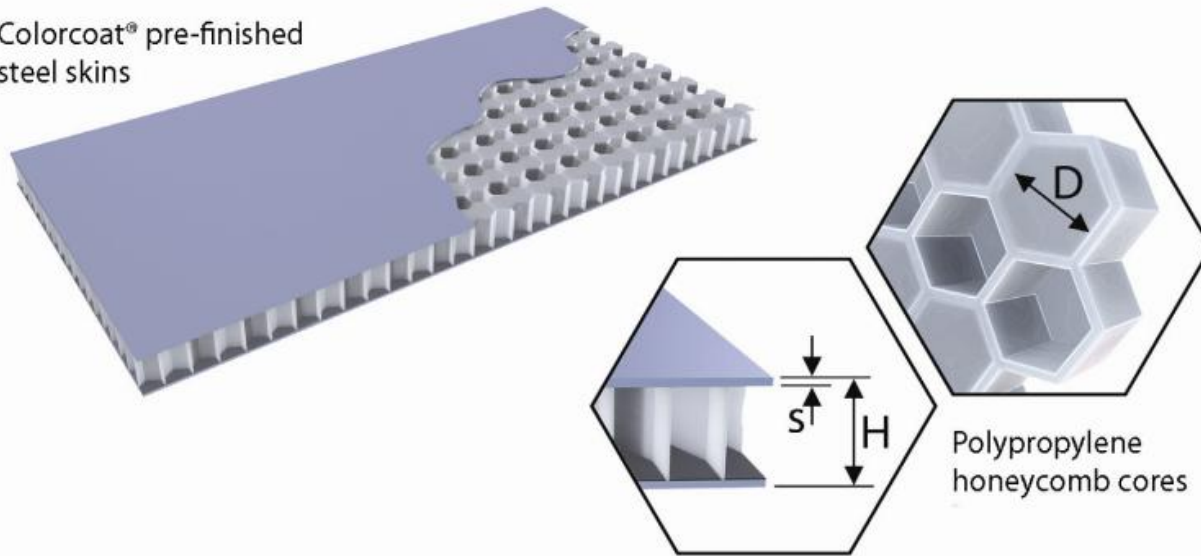


CONTINUVERLIJMING

Coretinium®



Colorcoat® pre-finished
steel skins



Product Information

Product code	Skin ⁽¹⁾ thickness s (mm)	Core height (mm)	Total height ⁽²⁾ H (mm)	Core cell diameter D (mm)	Panel weight (kg/m ²)	Rigidity E^{-1} (kNcm ² /m)
10mm Coretinium®	0.4	9.2	10.0	7.0	7.50	36,000

⁽¹⁾ Standard Colorcoat® pre-finished steel face based on 0.4mm S220 Galvalloy™ - other face thicknesses & grades available on request subject to minimum order quantity.

⁽²⁾ Standard thickness tolerance +/- 0.2mm.

TATA STEEL



Dank voor uw aandacht

